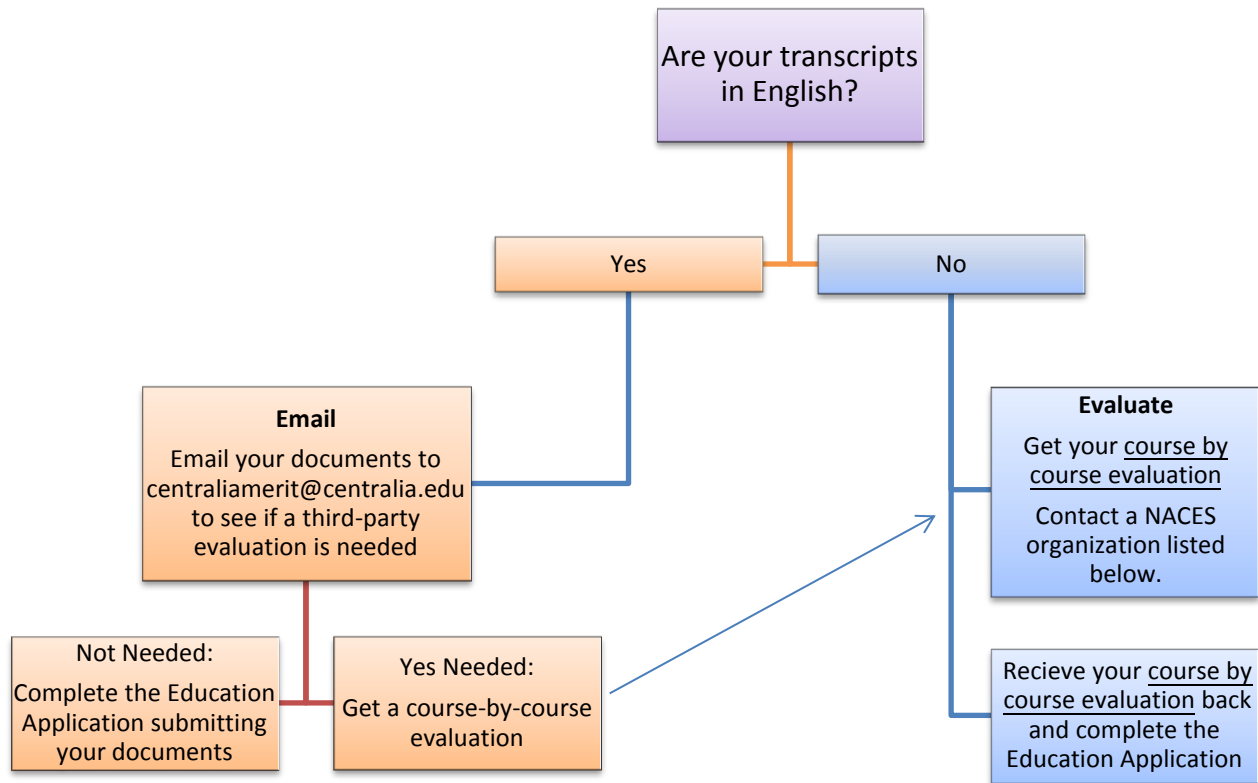


## Completing the Education Application for Degrees and Diplomas earned outside of the United States

This information only applies to those with college degrees.  
If you have a high school diploma earned outside of the US, follow the [Education Application steps](#).  
**Translation of your high school diploma is required.**



### Do I need a course by course evaluation of my degree?

If your transcripts are in English, but you earned your degree in another country, your transcripts can be informally reviewed to see if they can be processed without a NACES<sup>1</sup> evaluation. **Email copies** of your official transcripts to the Education Verification team at [centraliamerit@centralia.edu](mailto:centraliamerit@centralia.edu) to see if a NACES evaluation is needed.

### Completing a course by course evaluation of my degree:

Choose from any of the [NACES member organizations](#). Prices, process and turn-around time varies by organization. The following two organizations are examples of NACES member:

**Center for Applied Research, Evaluation, & Education, Inc.**  
<http://www.iescaree.com/>  
 Phone: +1-714-237-9272 / info@iescaree.com  
*Select the Course by Course Document Evaluation*  
<http://www.iescaree.com/services.php>

**Global Services Associates, Inc.**  
<http://www.globaleval.org/>  
 Phone: +1-310-828-5709  
*Select the Course by Course Document Evaluation*  
<http://www.globaleval.org/app.pdf>

<sup>1</sup> [NACES](#) stands for the National Association of Credential Evaluation Services

## Foreign Degree Evaluation Common Questions

### **Why do I need to complete a degree evaluation?**

When a course by course degree evaluation is completed, it will determine coursework content and credit calculations from education systems outside of the United States. This is used to determine the credits and content and tie back to Washington requirements.

### **Requiring an evaluation puts a burden on people who earned a degree outside of the US.**

We understand the added process and cost this requires. DEL is continuing to look at options to reduce impact to providers who need to complete the degree evaluation.

### **What does a course by course evaluation cost?**

Each of the NACES organizations set their own prices. The two organizations listed above have prices on their website and they range from \$160-\$175 for a course by course evaluation at the time this information was compiled.

### **I need my education verified now; I can't wait the processing time for a course by course evaluation.**

Communicate where you are in the process with your employer and, if needed, your licenser. Once you get your course by course degree evaluation returned from the NACES organization, you will complete the Education Application in MERIT and we can work with you to expedite your application if you let us know it is coming by emailing [MERIT@del.wa.gov](mailto:MERIT@del.wa.gov) or calling 866-482-4325 (choose option 5). Please note that email will receive a quicker response.